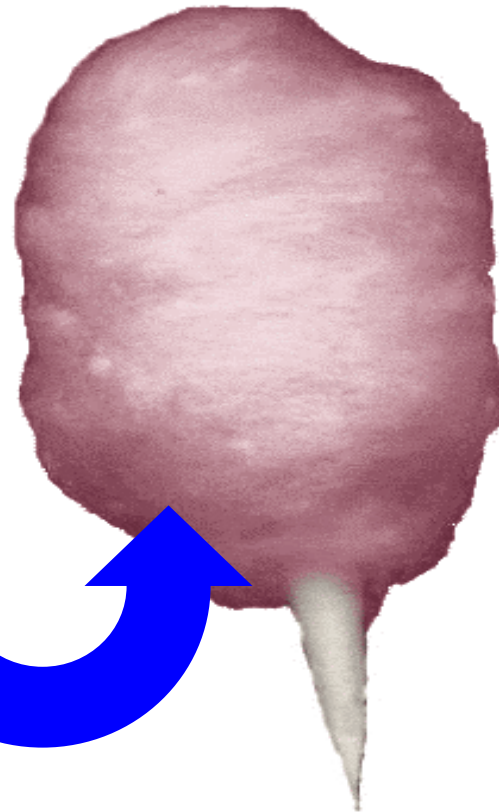
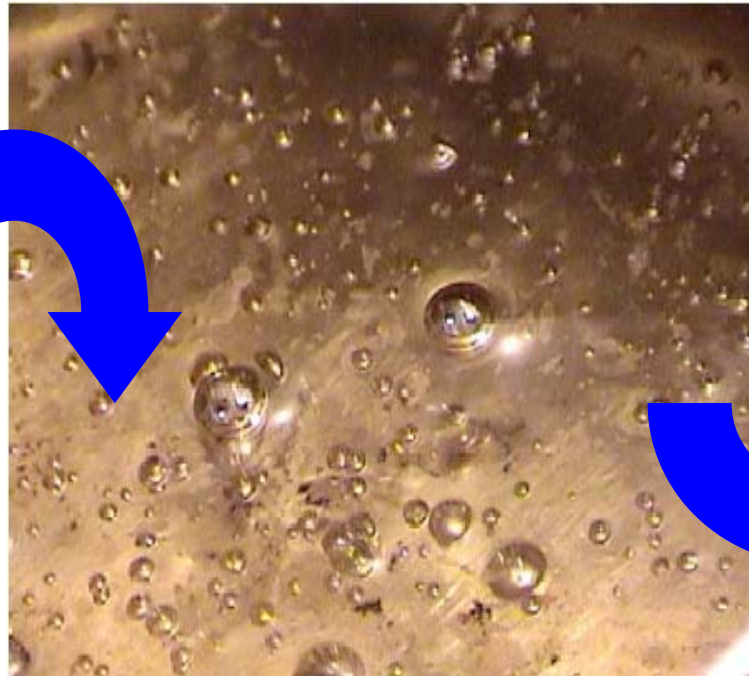
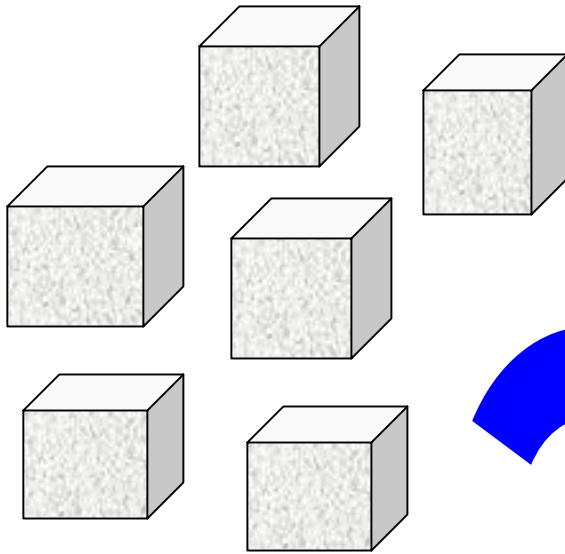


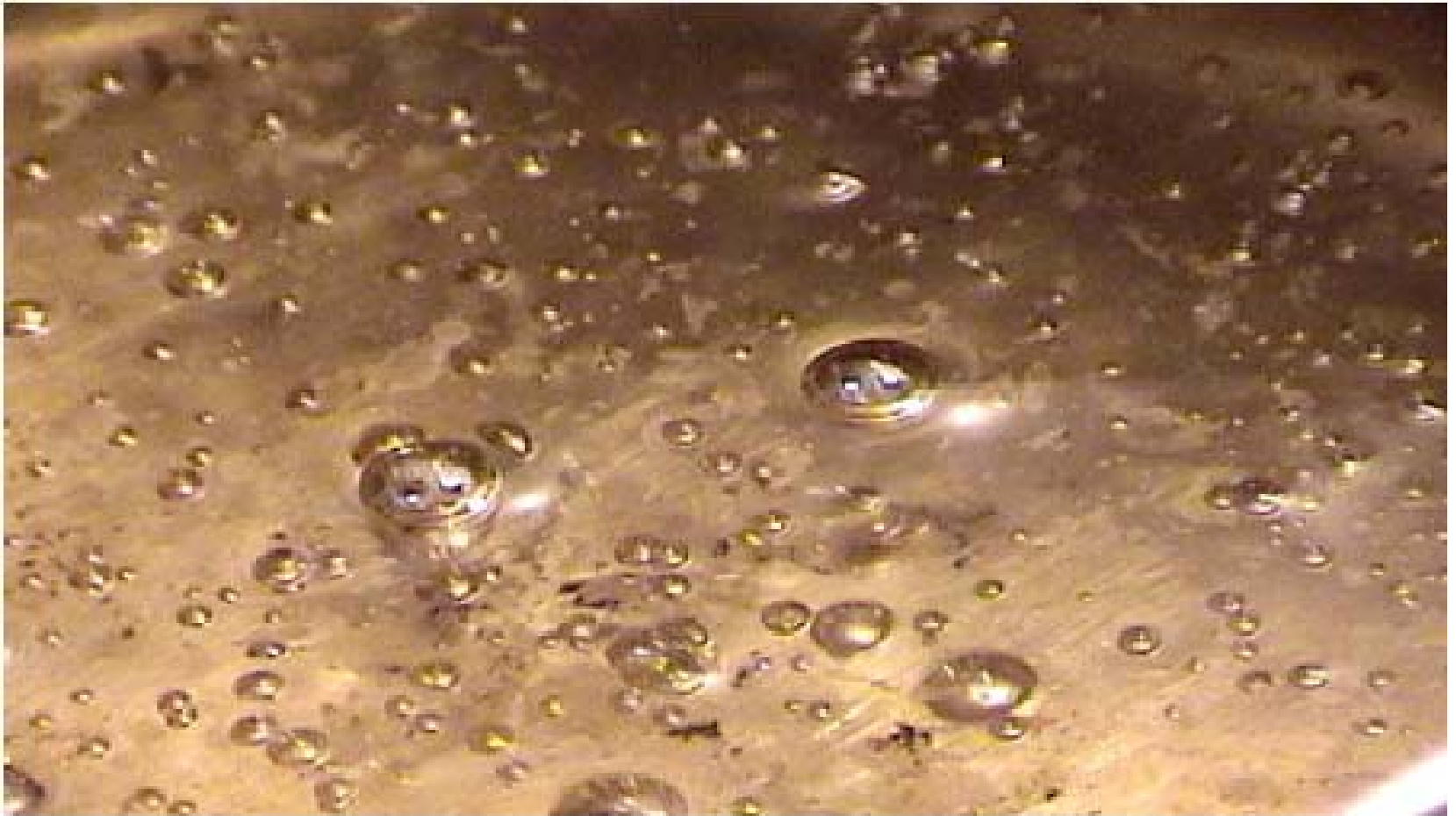
THE SWEET SCIENCE SHOW



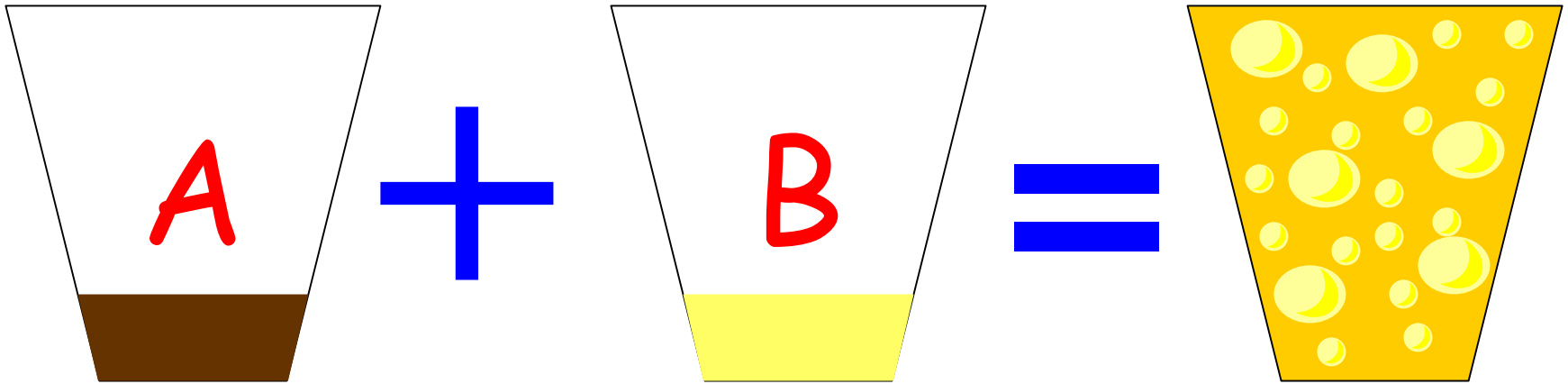
Candy Floss



Sugar melts at 186°C



Crunchie



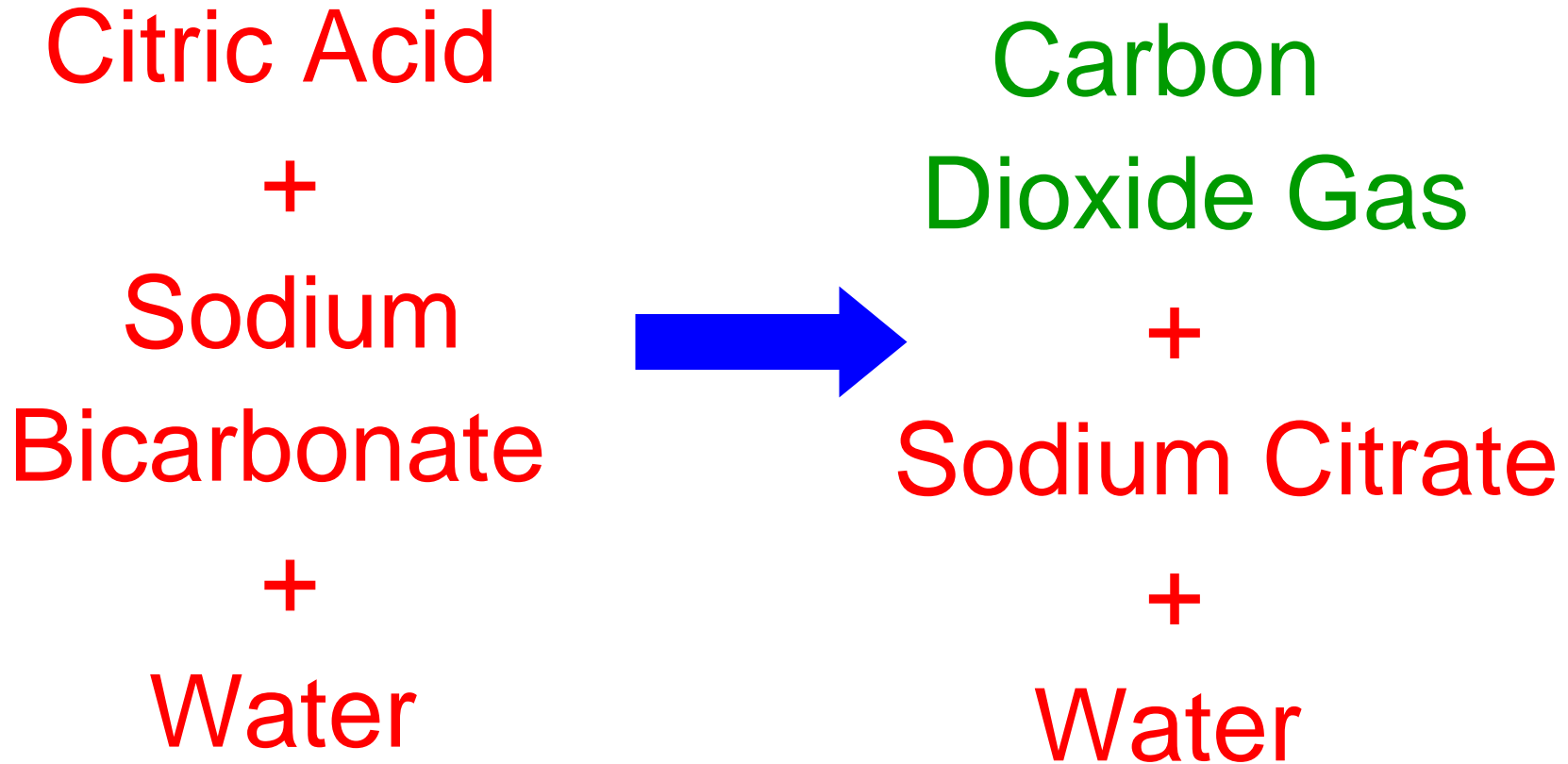
Sherbet Recipe

Citric acid

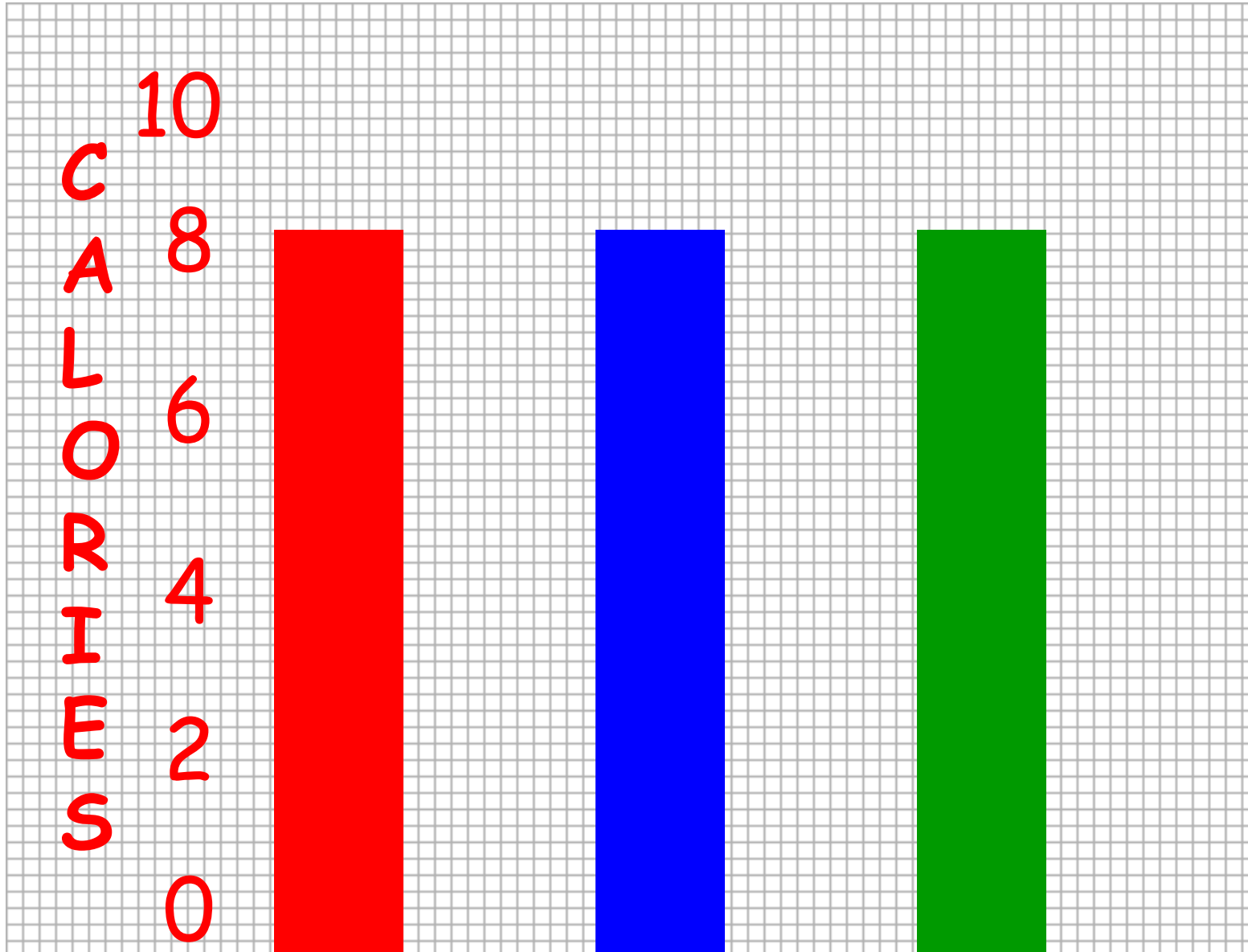
Sodium bicarbonate

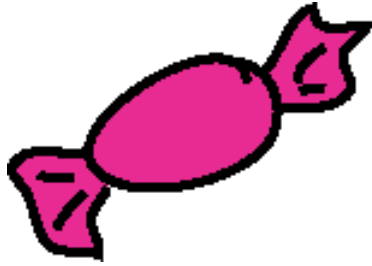
Ground up sugar

Sherbet Explosion

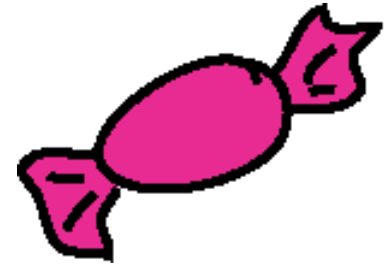


Energy Used by Skipping





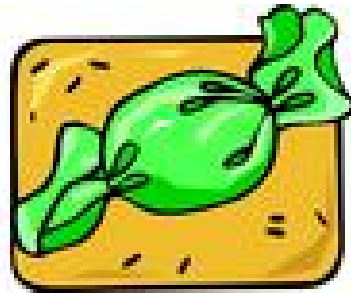
Summary



Sugar is used to make all sorts of sweets.

Different sweets are made in different ways.

Sweets and other foods contain energy.



THE SWEET SCIENCE SHOW

