

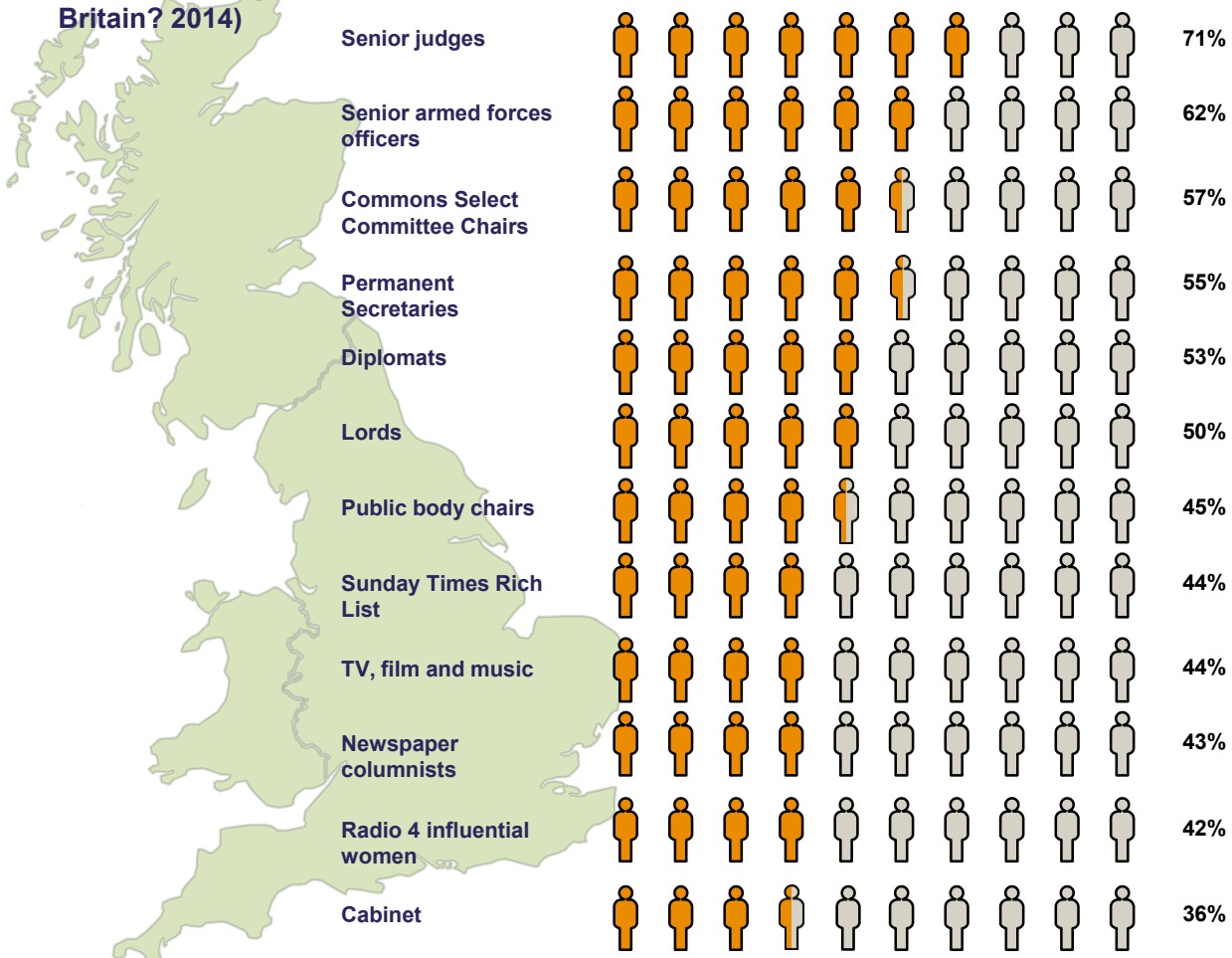


## **Social Mobility and the sciences**

David Johnston OBE

# Britain's elite attendance at independent schools (Elitist

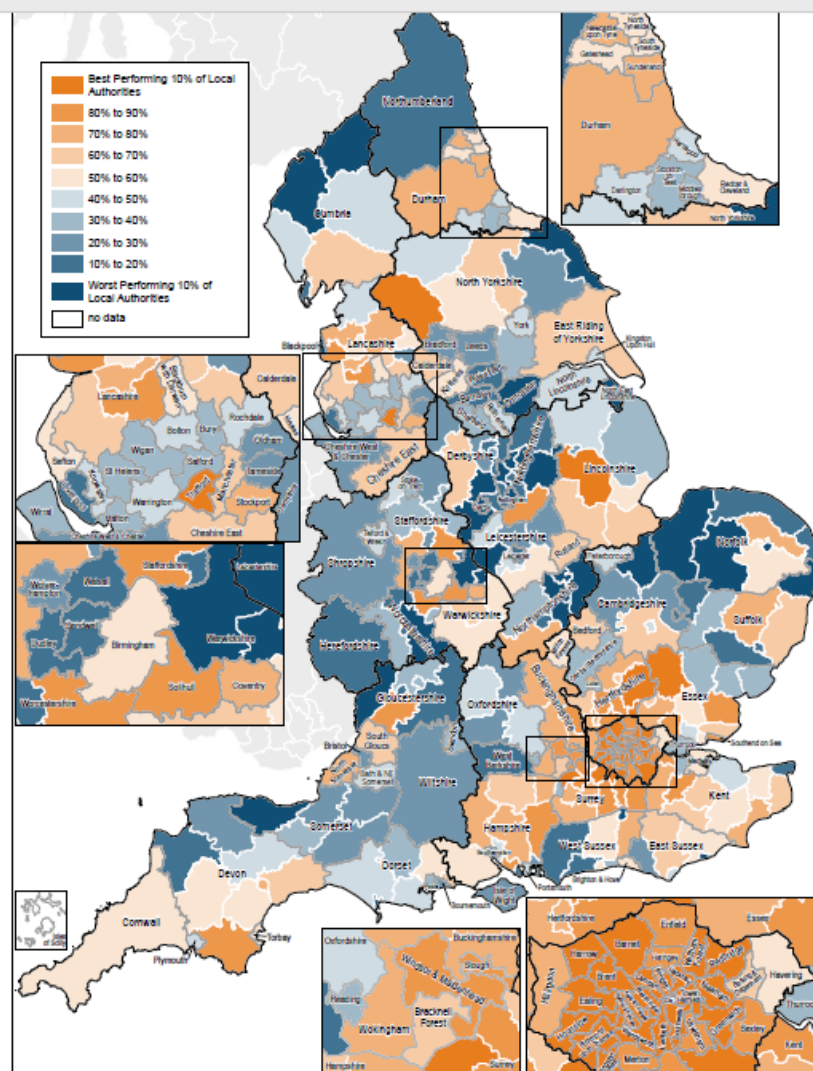
Britain? 2014)



A low ability child from a high-income family  
is

35%

more likely to be a high earner than a high ability child from  
low-income family



A person is

20 times

more likely to become a lawyer or doctor if a parent is a lawyer or doctor

# Family backgrounds of those in sciences

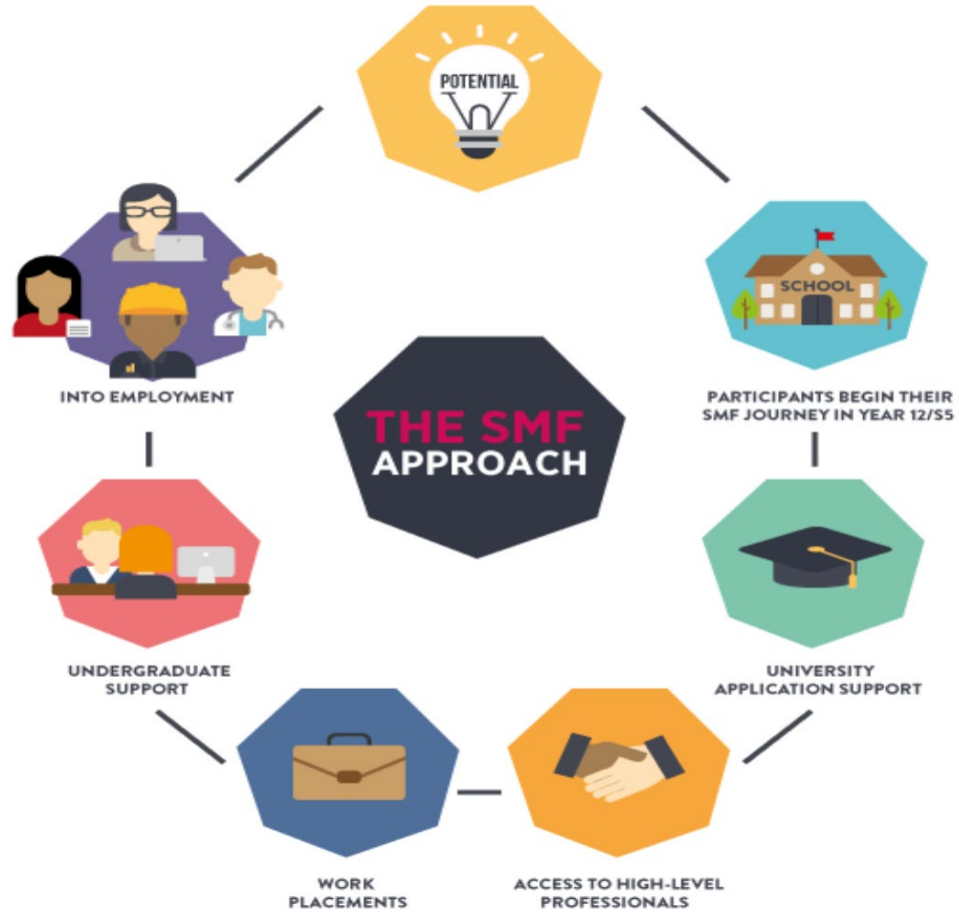
Profession	Professions	Intermediate	Working class
Doctors	73%	21%	6%
Life Science professionals	60%	31%	9%
Academics	58%	28%	14%
Scientists	53%	32%	15%
Health professionals	43%	37%	21%
Engineers	41%	39%	21%

“The playing field may be level, but certain kids get to practice at nights and weekends before the competition starts”

– Richard Reeves

“Some people are born on third base and go through life thinking they hit a triple”

– Barry Switzer





# Social Mobility Employer Index

Around 100 questions across 7 areas:

- Work with young people
- Routes into the employer
- Attraction
- Recruitment and selection
- Data collection
- Progression
- Internal/external advocacy
- In 2018, a staff survey accompanied the Index

University	State school (out of 153)	NS-SEC (out of 151)	POLAR 3 (out of 135)	TEF award
Birmingham	127	124	108	Gold
Bristol	147	146	127	Silver
Cambridge	146	150	130	Gold
Cardiff	116	121	68	Silver
Durham	145	147	120	Silver
Edinburgh	141	140	N/D	n/a
Exeter	142	145	119	Gold
Glasgow	119	129	N/D	n/a
Imperial	144	144	126	Gold
King's	136	110	115	Silver
Leeds	126	125	89	Gold
Liverpool	112	112	65	Bronze
LSE	140	131	128	Bronze
Manchester	123	128	81	Silver
Newcastle	137	134	77	Gold
Nottingham	131	135	103	Gold
Oxford	150	151	132	Gold
Queen Mary	111	64	122	Silver
Queen's (Belfast)	13	90	114	n/a
Sheffield	114	130	78	Silver
Southampton	117	123	98	Bronze
UCL	139	138	125	Silver
Warwick	135	137	113	Silver
York	121	136	92	Silver

TOP 50

# SOCIAL MOBILITY

## EMPLOYER INDEX 2018

- |  |   |                                  |
|--|---|----------------------------------|
| 1 KPMG UK LLP                                | 19 Freeths LLP                                | 37 Financial Conduct Authority   |
| 2 Grant Thornton UK                          | 20 Severn Trent Water                         | 38 DLA Piper                     |
| 3 Ministry of Justice                        | 21 O2   | 39 Penguin Random House UK       |
| 4 Bryan Cave Leighton Paisner                | 22 Clifford Chance LLP                        | 40 M&G Investments               |
| 5 Deloitte                                   | 23 Eversheds Sutherland LLP                   | 41 Pinsent Masons LLP            |
| 6 PwC  | 24 The Honourable Society of the Inner Temple | 42 Royal Navy and Royal Marines  |
| 7 EY   | 25 Department for International Trade         | 43 Ministry of Defence           |
| 8 Enterprise Rent-A-Car                      | 26 Capgemini UK                               | 44 HFW                           |
| 9 Civil Service Fast Stream and Early Talent | 27 Fujitsu                                    | 45 Slaughter and May             |
| 10 Baker McKenzie                            | 28 BBC  | 46 HM Revenue & Customs          |
| 11 Linklaters LLP                            | 29 Standard Life Aberdeen                     | 47 Mayer Brown International LLP |
| 12 J.P. Morgan                               | 30 JLL  | 48 Dentons                       |
| 13 Aviva PLC                                 | 31 National Grid PLC                          | 49 Santander UK                  |
| 14 Wm Morrison Supermarkets PLC              | 32 Barts Health NHS Trust                     | 50 British Land                  |
| 15 Herbert Smith Freehills                   | 33 The Co-op                                  |                                  |
| 16 Mazars                                    | 34 HM Treasury                                |                                  |
| 17 Department for Work & Pensions            | 35 Manchester University NHS Foundation Trust |                                  |
| 18 Department for Education                  | 36 Hogan Lovells International LLP            |                                  |

SOCIAL  
MOBILITY  
FOUNDATION



[www.socialmobility.org.uk](http://www.socialmobility.org.uk)