




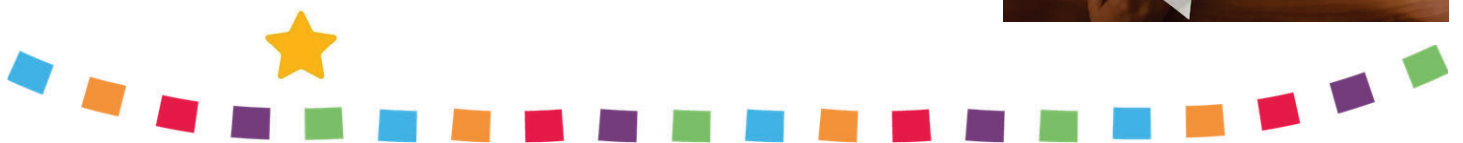
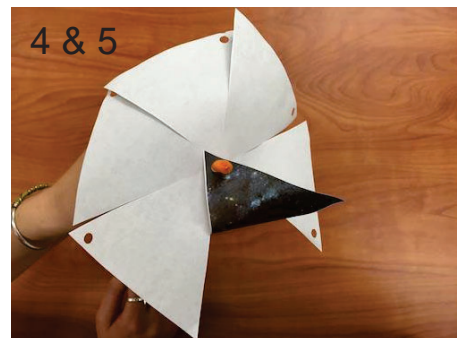
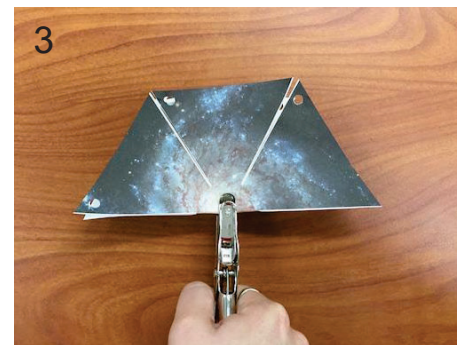
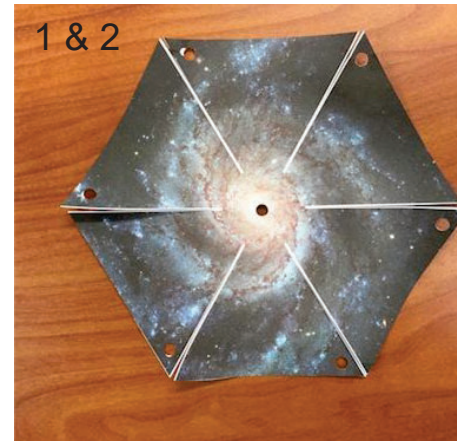
Disney · PIXAR
LIGHTYEAR

Pinwheel Galaxy



INSTRUCTIONS

1. Cut out the template for your galaxy pinwheel.
1. Cut along the white lines. 
1. Punch holes in the white dots: six around the edges and one in the centre. You may have to fold the hexagon over to reach the centre.
1. Turn the paper so it's face-down and thread the pipe cleaner through the centre hole.
1. Going around the circle, fold each flap so the pipe cleaner goes through the hole.
1. Twist the pipe cleaner to secure the front of the pinwheel.



See the New Movie

© 2022 Disney / Pixar

www.cambridgesciencecentre.org

Disney · PIXAR
LIGHTYEAR

Pinwheel Galaxy



INSTRUCTIONS continued

7. Wrap the other side of the pipe cleaner around a lolly stick. Don't make it too tight, or it won't be able to move.
7. Blow on it and watch the galaxy spin!

HINT

If the pinwheel doesn't spin, make sure the pipe cleaner isn't secured so tightly that it doesn't let the paper move. If the paper flaps are hitting the stick, flatten out the pinwheel on a table. Then carefully open each point from the front. This will let air in to move the pinwheel



The Pinwheel Galaxy is 21 million light years from Earth. This means that the light we're seeing in this image left the Pinwheel Galaxy about 21 million years ago - millions of years before humans even existed!



Pinwheel galaxy template

CAMBRIDGE
SCIENCE
CENTRE



