



**Let's talk  
about your  
experience...**

The Liminal Space



**What is your  
bold idea?**

The Liminal Space




**How could  
we connect  
with others to  
change this?**

The Liminal Space




**What can we  
do day-to-day?**

The Liminal Space



**I AM PART OF A  
BOLD  
FUTURE**



Take 5 minutes to fill this in ahead of a 15 minute cup of tea with someone who you think has valuable insight around your topic or area of enquiry



**Conversation topic:**



**Questions I'd like to ask:**



**Why my colleague or project partner has valuable insight:**



**What am I hearing?:**



Take 5 minutes to fill this in ahead of a 15 minute cup of tea with someone who you think has valuable insight around your topic or area of enquiry



Conversation topic:



Questions I'd like to ask:



Why my colleague or project partner has valuable insight:



What am I hearing?:

**A Bold Future is...**

The Liminal Space



The background features a vibrant blue upper section that transitions into a large, textured green area. The green area has a grainy, stippled appearance. In the top-left corner, there is a white, angular shape that overlaps the blue and green sections. The overall composition is dynamic and modern.

# **BOLD FUTURES**

**Notes & Ideas**

An abstract graphic on the left side of the page, featuring overlapping organic shapes in shades of green and blue. A white rectangular area is positioned in the lower-left corner of this graphic, containing the text 'These bold ideas belong to:'.

**These bold ideas belong to:**

## **Welcome to Bold Futures!**

Here are some materials that will guide you through our time together – though you are of course free to use whatever works best for you. We'll be using a combination of digital and analogue tools to capture and develop our thinking together

The conversations we'll be having will consider the following:

*How can we collectively and individually build capacity to deliver innovative and values-led work – which is required to remain relevant to audiences, funders and partners?*

*What learnings and opportunities can we share and develop to become more resilient and meet the operational challenges we face?*

On the following pages are the key areas that we will focus on together, which were highlighted through previous research and discovery work.

## Evaluation Innovation:

### **A sector wide shared language, development and enhancement of impact measuring for audiences.**

*How will this help build better relationships with our audiences?:*

We can build our ability to understand what genuine impact we are making in order to develop and adapt. Collective evaluation language and methods might help us share and compare more easily and raise the bar of what we deliver as a sector.

*How will this help build resilience?:*

A better way to show how we are making impact to funders and partners, making our work more relevant and appealing for resourcing long term. More streamlined and useful evaluation will be less of a tick box exercise, take less resource and become a tool for real time development.

*How will this make us better partners for our communities?:*

We will be able to have dialogue around successes and opportunities in more meaningful and tangible ways, and they will be able to see we are listening, reflecting and adapting. We will have deeper insight into what our audiences and communities need, and will be better placed to use our resources efficiently.

## Listening and Sharing:

### **Inclusive communication and resource sharing, both internally and cross sector; favouring ground up dissemination and inclusion of all levels of staff, as well as regular dialogue opportunities.**

*How will this help build better relationships with our audiences?:*

We will create more space for insight gathering across our organisations, valuing input from all business areas – we will understand how our organisation is functioning at any time. Regular group reflection will become part of our practice and we will be able to integrate audience insight more easily.

*How will this help build resilience?:*

Better idea sharing will help stop duplication of conversations, and create a better resourced sector as a whole. Staff retention is likely to improve as people feel valued in decision making, and expertise will not be lost when people move on. We will be able to identify areas to save costs, invest and develop new business practice more effectively.

*How will this make us better partners for our communities?:*

Our internal communications will make us better colleagues and partners, and we will be able to demonstrate we're really listening and adapt to the people we work with. We will become more critical and able to hold the tensions of our work better, as we involve our communities in our work even more.

## Explore and Experiment:

**Better mechanisms and opportunities for reflection and critique as well as ability to test and look outside of sectors to learn about innovative engagement, content and practice.**

*How will this help build better relationships with our audiences?:*

We will be able to develop leading experiences and engagement for visitors, and will be able to connect what we offer to wider society and culture to make their time with us more meaningful and relevant.

*How will this help build resilience?:*

New ideas, methods and practice will be able to be more easily developed, requiring less large scale investment up front. We will be able to 'fail' better and get more insight into what works for our organisation. As a sector, we will be able to share wisdom and learning, and be honest about successes and areas to develop. We will be able to identify new business and revenue opportunities.

*How will this make us better partners for our communities?:*

We will demonstrate a willingness to learn and collaborate, and create time and resources to build this into our relationships. New ideas can be brought into our organisation from a wider range of expertise and lived experiences, and as a sector we will be able to deeply understand what good and bad community work looks like through our range of experiences and projects.

## Power Dynamics and Inclusion:

**Sustainable and implementable methods for decolonising, non-extractive community building and equitable practice at every level; internally and externally.**

*How will this help build better relationships with our audiences?:*

Our collections, content and experiences will be relevant, considered and demonstrate values of a fair society. Our staff will be able to walk the talk and create welcoming spaces for visitors, who will want to visit more often and feel that our places are for them.

*How will this help build resilience?:*

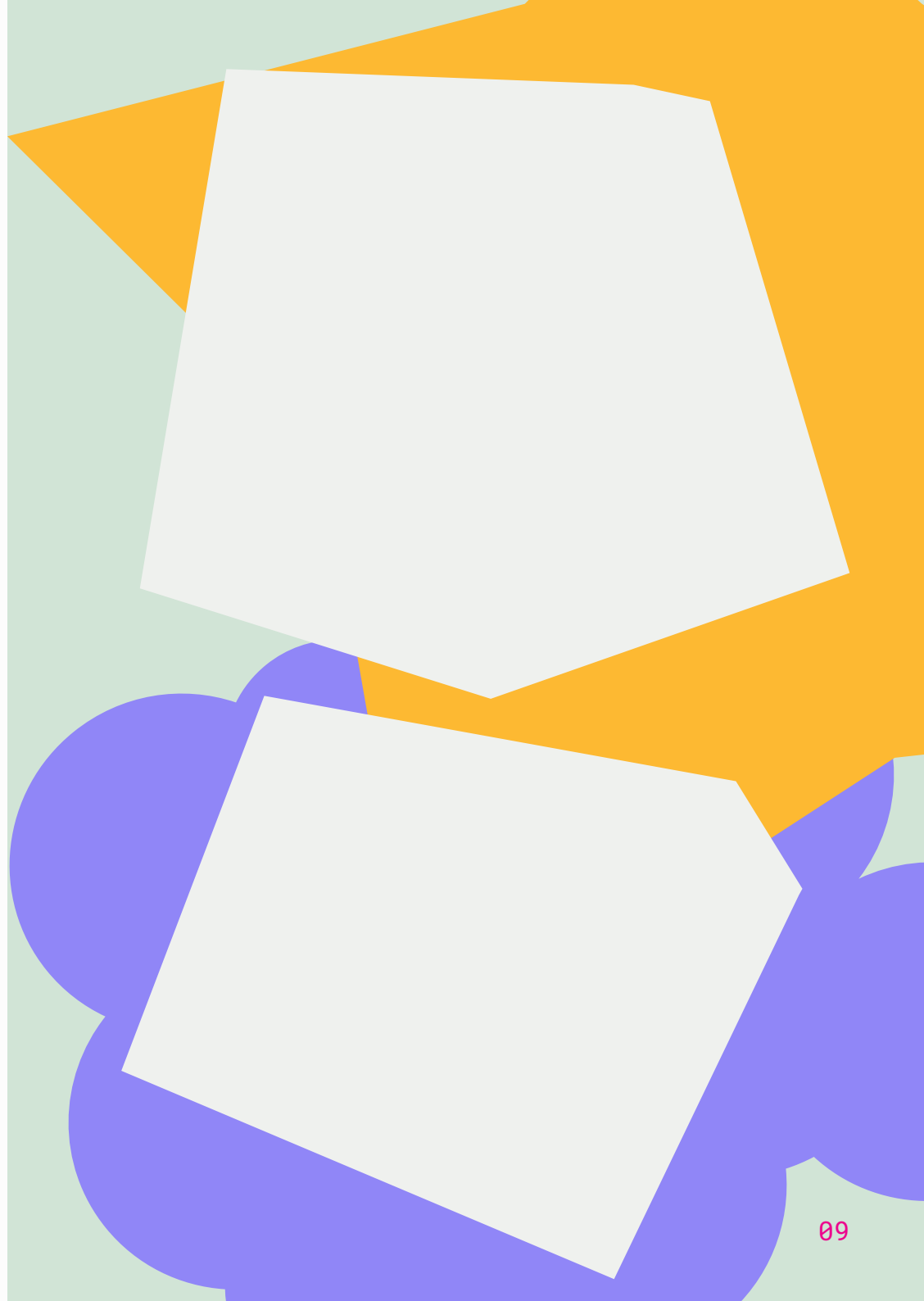
Our organisation will be values-led, and not perpetuate racist, patriarchal, ableist practice and will be able to challenge power structures. We will create workplaces people want to belong to, and our organisations will become examples of and spaces for societal wellbeing – making them more relevant and investable, and able to retain expertise and talent. Our values-led organisations will ensure visitors spend more time and money with us.

*How will this make us better partners for our communities?:*

We will truly add value to communities, and empower other organisations and individuals through our work. We will give space, time and resources for them to thrive and in turn benefit from equitable and long term relationships that aren't just wed to funding bids or other criteria.



Handwriting practice lines consisting of 20 horizontal dotted lines on a white background.



Handwriting practice lines on page 10, consisting of 20 horizontal dotted lines.

Handwriting practice lines on page 11, consisting of 20 horizontal dotted lines.





**Workshop 1:  
8 September 2022**

# **CONVENING AND SHARING**

**What do you want to get out of this process?**

# GROUP DISCUSSION 1

**Share: What I'm hearing from others**

**Reflect: Other things I've tuned into or found interesting**

**Inspire: What have I seen or heard about**

# GROUP DISCUSSION 2

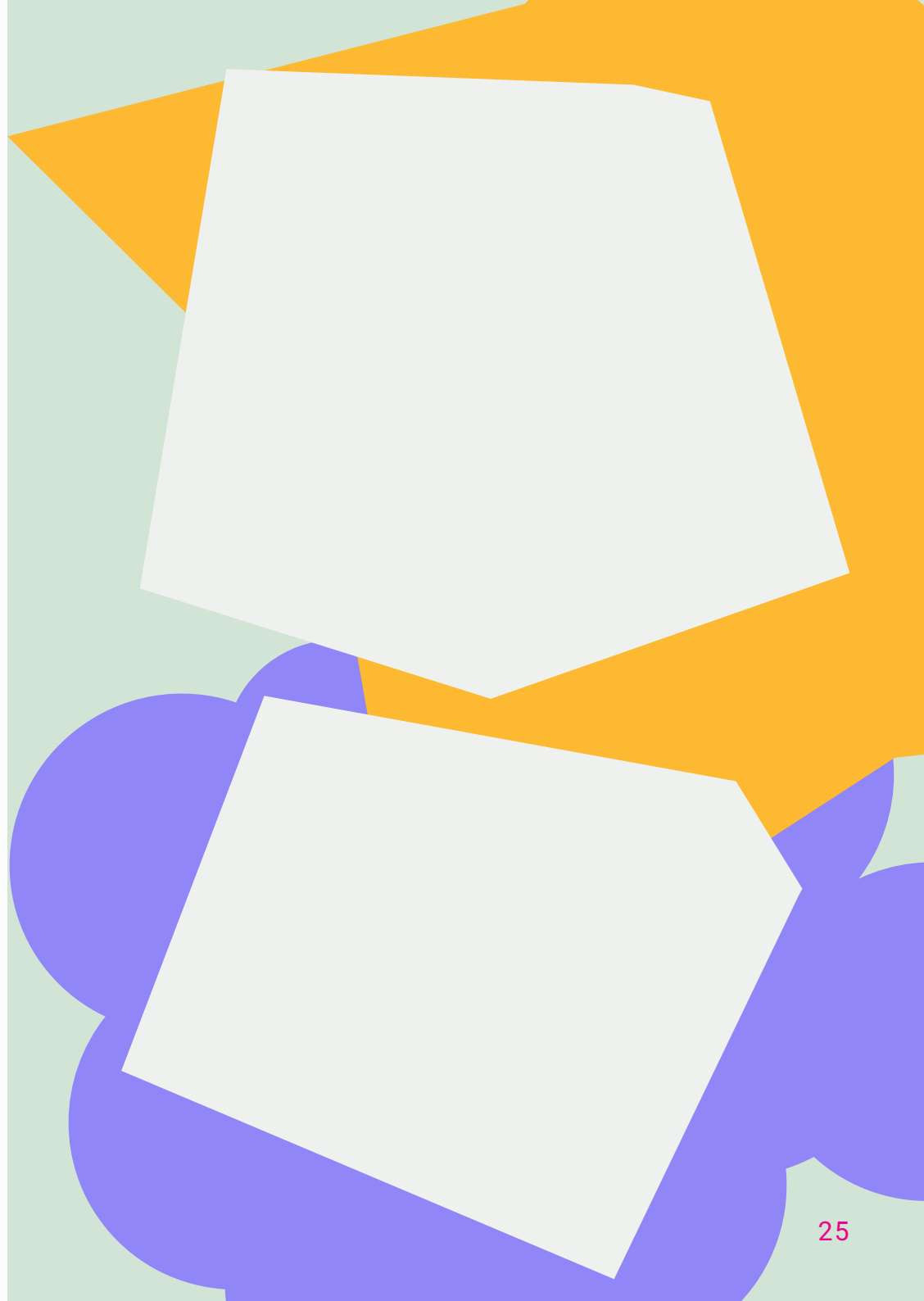
**Share: What I'm hearing from others**

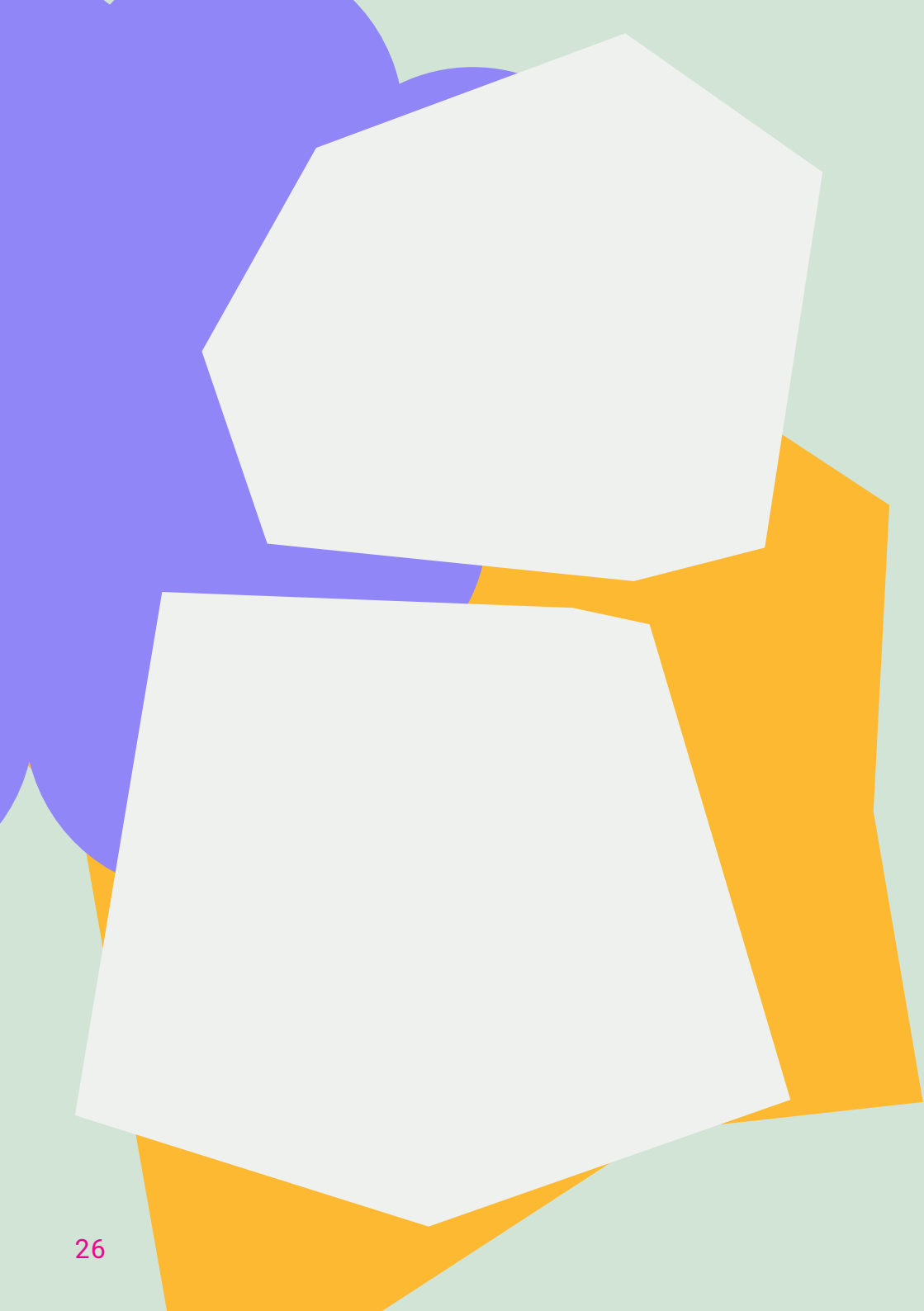
**Inspire: What have I seen or heard about**

**Reflect: Other things I've tuned into or found interesting**

**My question/s?**

Handwriting practice lines on page 24, consisting of 20 horizontal dotted lines.





A series of 20 horizontal dotted lines for writing, spanning the width of the page.

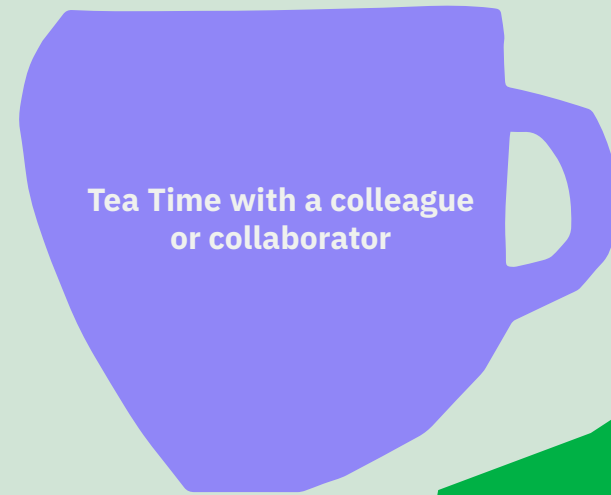




Handwriting practice lines on page 30, consisting of 20 horizontal dotted lines.

Handwriting practice lines on page 31, consisting of 20 horizontal dotted lines.

# TIME TO REFLECT WITH MY TEAM AND AUDIENCE

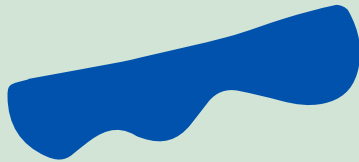


Make some time – half an hour or so – to visit your venue or space during a normal day. It could be sitting down in one particular gallery or zone, or you might like to walk around the whole venue. If you don't have a space, just take a walk and reflect on your last event or exhibition.

*Keep your question in mind as you tune into what you notice.....*

Some of the following prompts might be useful:

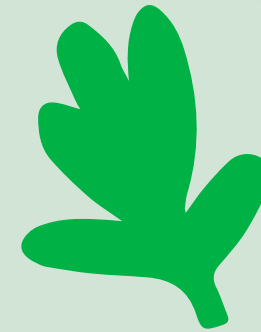
**How are visitors encountering the space and environment?**



**How is my team using this space and environment?**



**What excites me about seeing my organisation in action?**



**What makes this place unique?**



**If I could wave a magic wand I would....**

Handwriting practice lines on page 36. The page contains 20 horizontal dotted lines for writing practice.

Handwriting practice lines on page 37. The page contains 20 horizontal dotted lines for writing practice.

Handwriting practice lines on page 38. The page contains 20 horizontal dotted lines for writing practice.

Handwriting practice lines on page 39. The page contains 20 horizontal dotted lines for writing practice.

Handwriting practice lines on page 40. The page contains 20 horizontal dotted lines for writing practice.

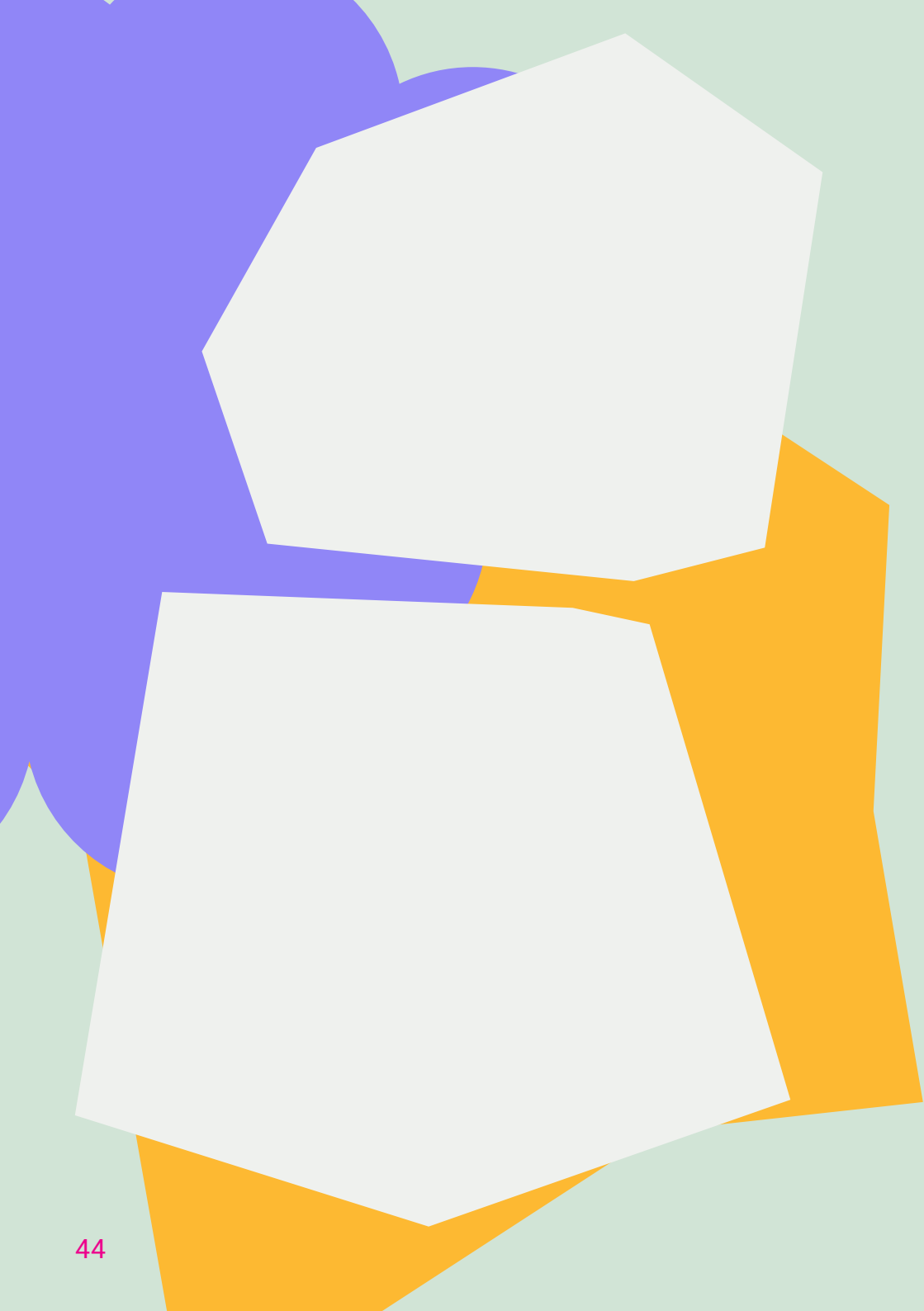
Handwriting practice lines on page 41. The page contains 20 horizontal dotted lines for writing practice.

**What have I noticed after making time to connect with my colleagues and audience?**

**Insight 1:**

**Insight 2:**

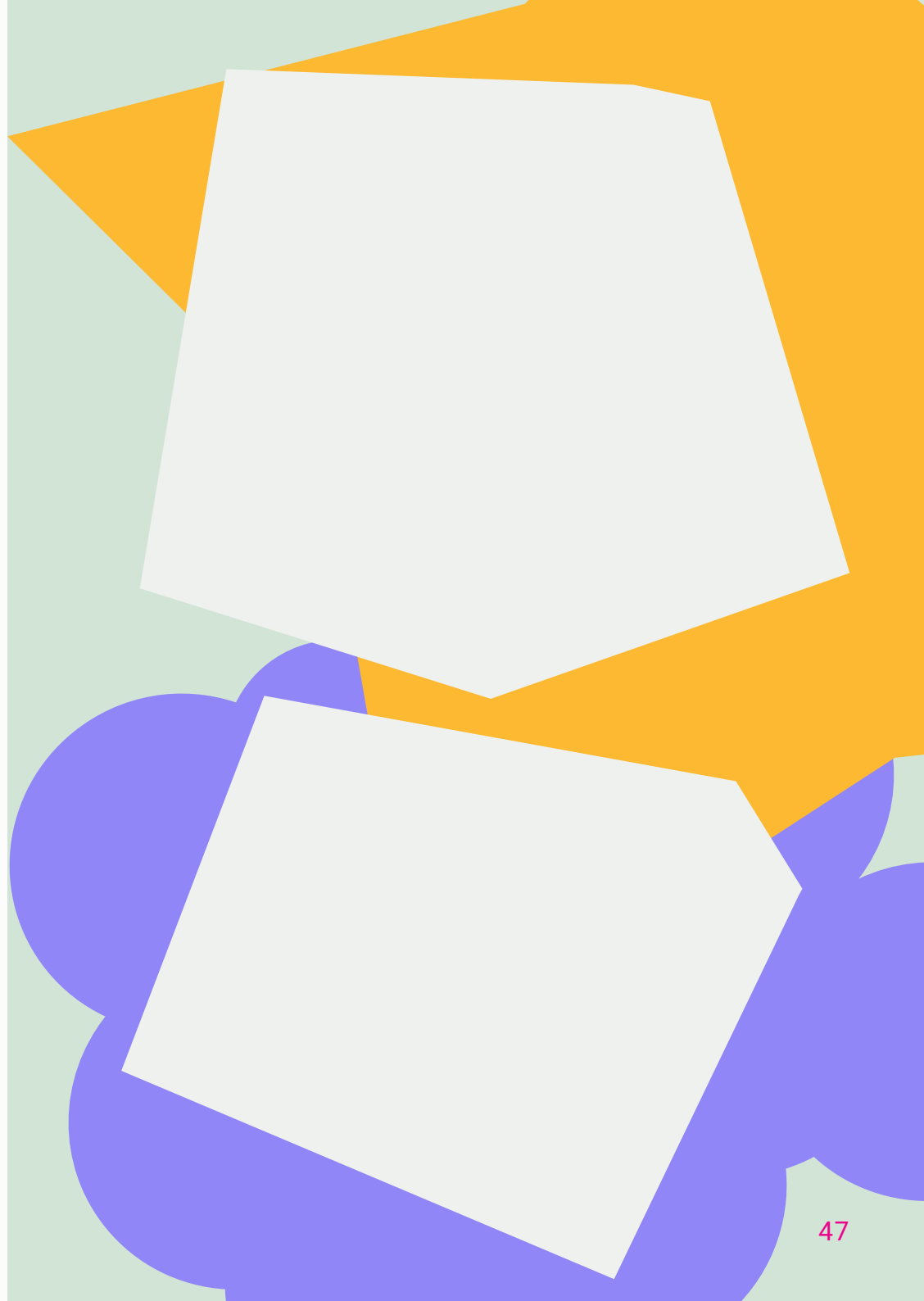
**Insight 3:**



A series of 20 horizontal dotted lines for writing, spanning the width of the page.



Handwriting practice lines on page 46. The page contains 20 horizontal dotted lines for writing practice.



Handwriting practice lines on page 48. The page contains 20 horizontal dotted lines for writing practice.

Handwriting practice lines on page 49. The page contains 20 horizontal dotted lines for writing practice.

Handwriting practice lines on page 50. The page contains 20 horizontal dotted lines for writing practice.

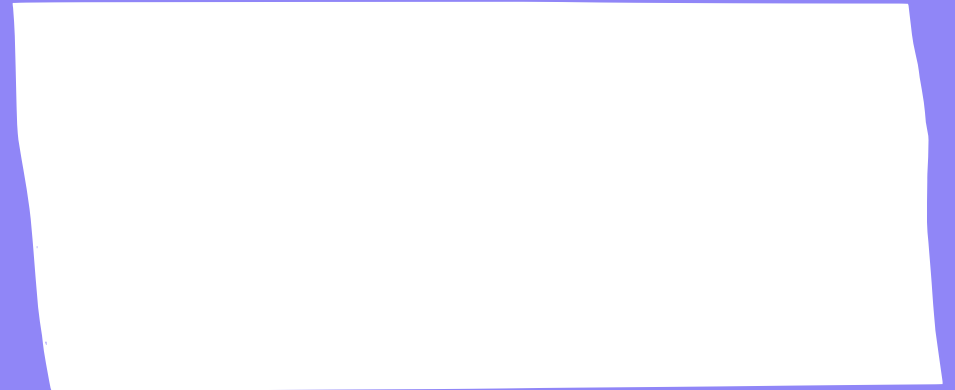
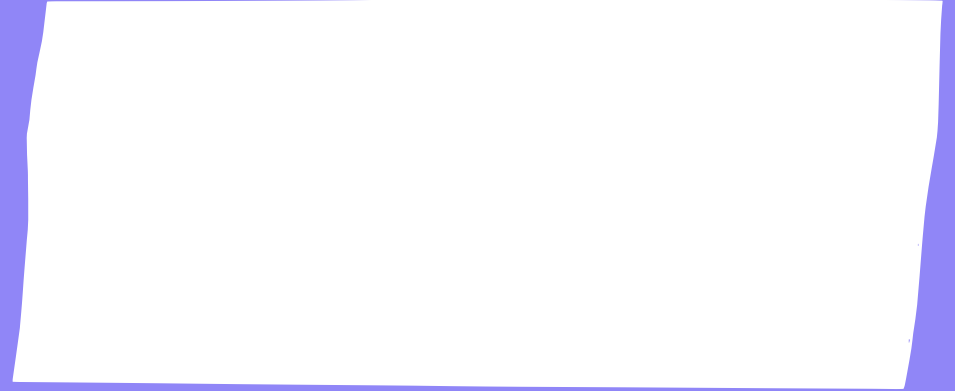
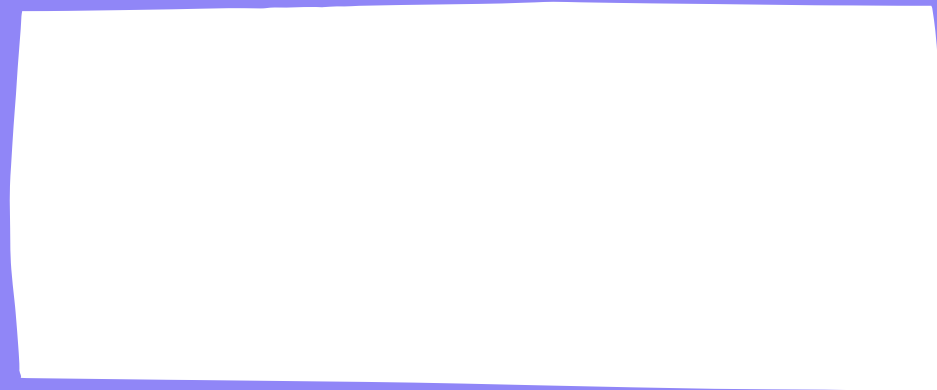
Handwriting practice lines on page 51. The page contains 20 horizontal dotted lines for writing practice.

**Workshop 2:  
20 September 2022**

# **IMAGINING AND PROBLEM SOLVING**

## Hearing from everyone

# IDEATION



# BIG IDEAS FOR INDIVIDUAL ORGS

**What is it?**

**Why is it needed?**

**Who is involved?**

**What are its principles?**

**What makes it bold?**

# BIG IDEAS FOR OUR SECTORS

**What is it?**

**Why is it needed?**

**Who is involved?**

**What are its principles?**

**What makes it bold?**

**Other things that I've tuned into or found interesting:**

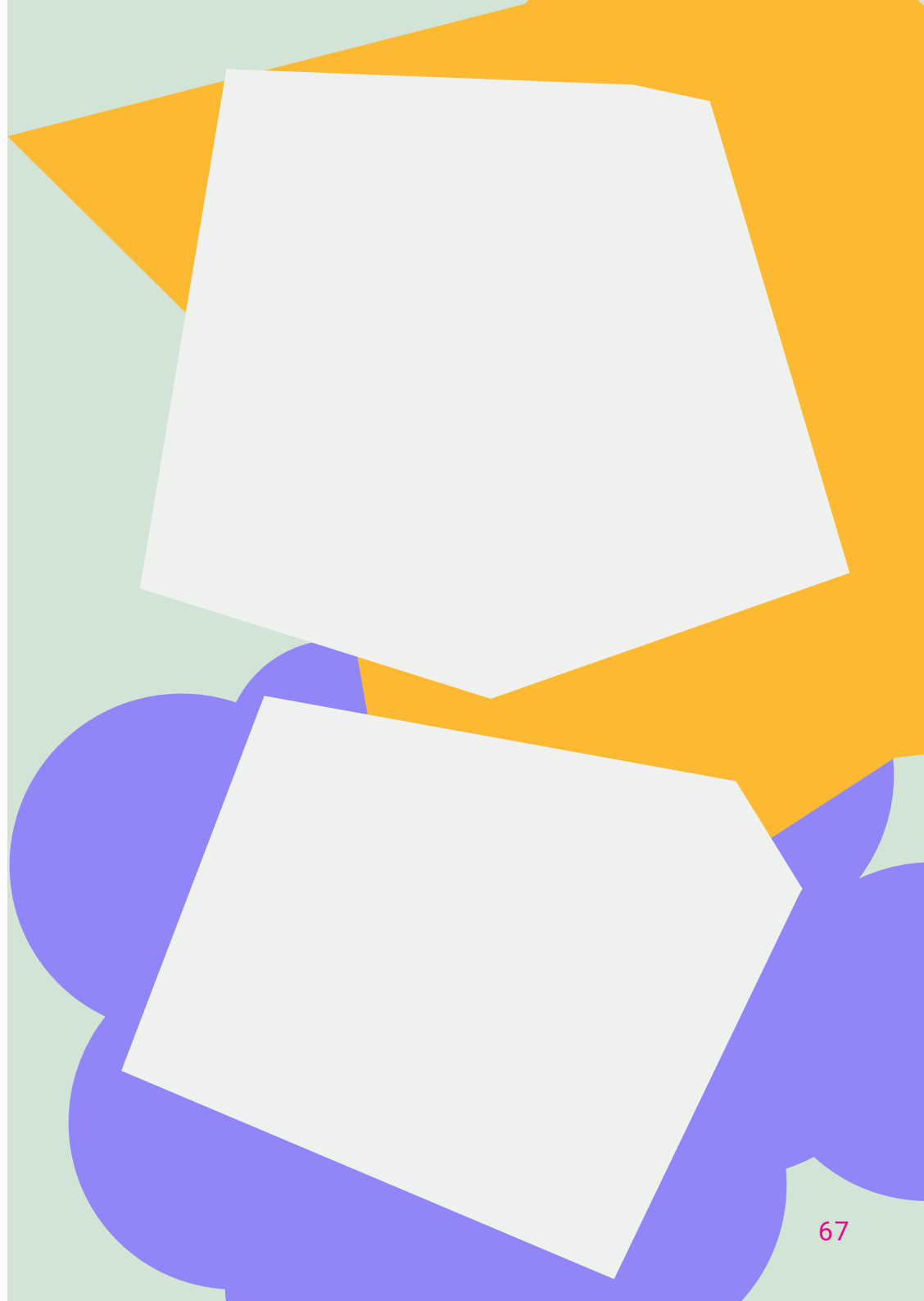


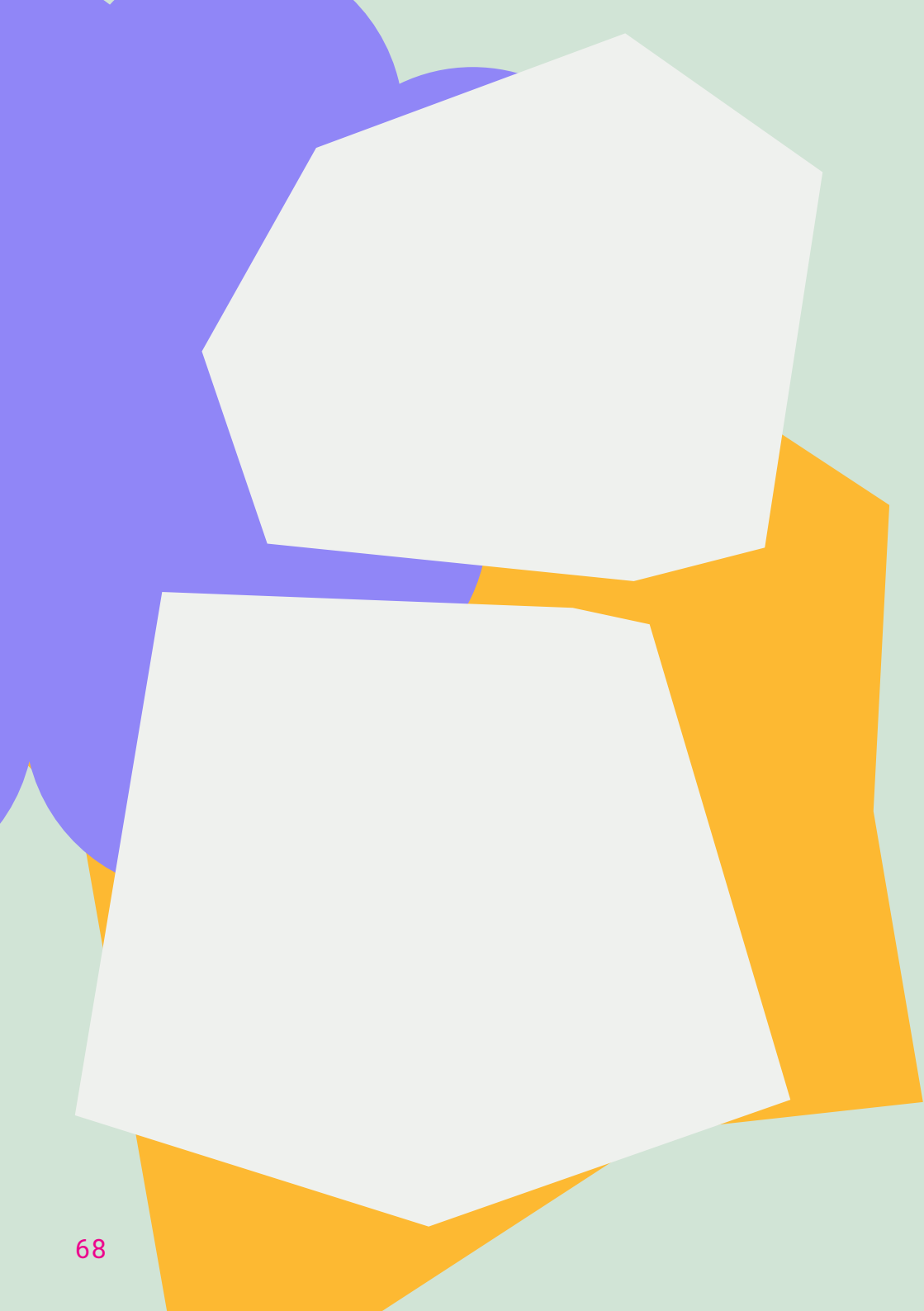
## My personal reflection



A series of horizontal dotted lines for writing, spanning the width of the page.

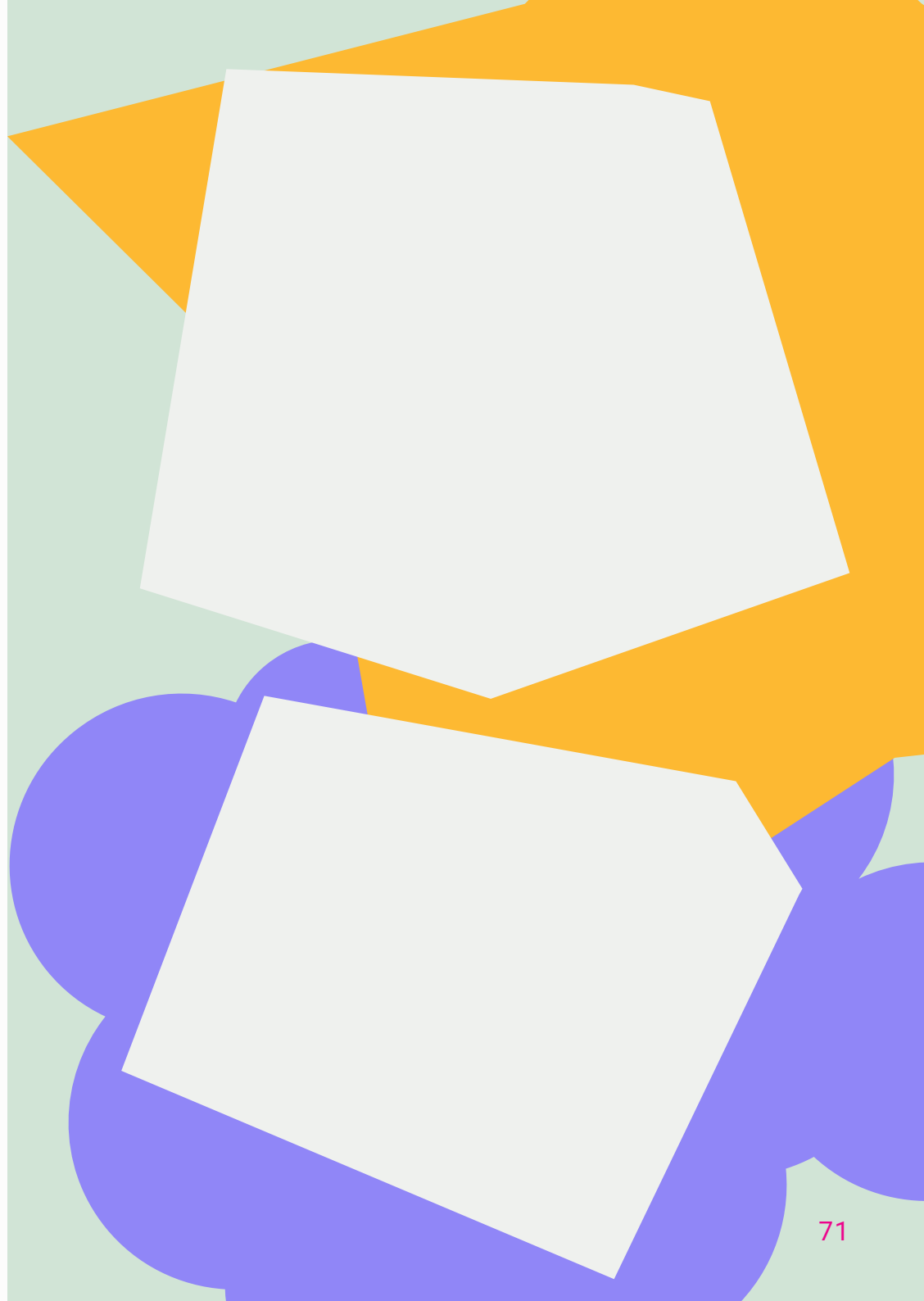
Handwriting practice lines consisting of 20 horizontal dotted lines on a white background.





A series of 20 horizontal dotted lines for writing, spanning the width of the page.

A series of horizontal dotted lines for writing, spanning the width of the page.



The background is an abstract composition of colors and shapes. A solid blue area occupies the top-left corner. A large, irregular green shape dominates the center and right side. A white, angular shape is positioned in the top-right corner, partially overlapping the blue and green areas. The overall effect is a layered, geometric aesthetic.

# The Liminal Space